



Scraper Unit



High Shear
Blending with
Scraped Surface
Heat Transfer
... All in One
Vessel

Likwifier Plus



You Asked for a Blender to Solve a Wide Range of
Agitation Problems —
Now You Have It!

- Cook with steam and/or hot water
- Cool with glycol, water or brine
- Slow speed scraper and high speed shear impeller provides fast, efficient blending and heat transfer
- No product burn-on or freeze-on
- Total movement of viscous products
- Designed to assure thorough cooking, proper consistency and uniform mixing
- High speed chopping impeller available for efficient blending of cheese blocks, frozen dough, and many more products



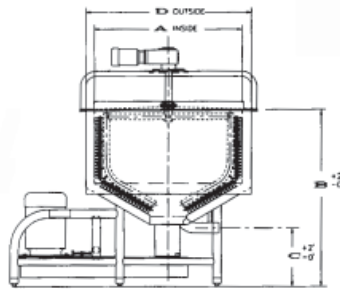
LIKWIFIER™

a division of
ENSIGHT
ENGINEERING CREATIVE SOLUTIONS

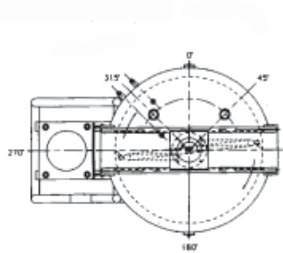
1230 Taney North Kansas City, Missouri 64116
816-561-9050 • Fax: 816-561-7778
www.likwifier.com

LORSS with Detachable Lids

Model Gal.	A	B	C	D	Side/Bottom Scrape		Impeller Diameter Inches	Motor Size HP	Side wall Template Sq. ft.	Bottom Cone Template Sq. ft.
	Inches				HP	RPM				
25	30	37	16.75	34	1	4.2-21	10	10	2	3.4
50	34	42	16.75	39	2	4.2-21	10	25	4	4.6
100	48	45	16.75	53	2	4.2-21	12	50	5.8	11.9
200	58	63	16.75	63	3	4.2-21	14	60	10.3	17.7
300	64	63	16.75	69	5	4.2-21	14	75	14.6	21.3
400	64	70	16.75	69	7.5	4.2-21	14	100	24.8	21.3
500	64	77	16.75	69	7.5	4.2-21	14	125	35.6	21.3



Elevation View



Top View

Standard:

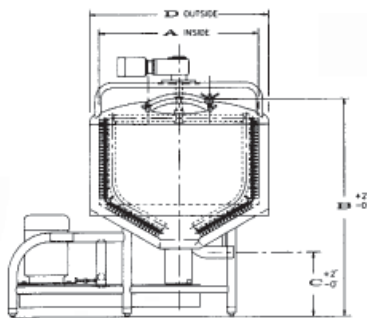
- Two 2" clamp style inlets
- One 3" clamp style outlet
- Dimple heat transfer is rated for 125 psi ASME certified
- 0.25 316L product contact surface

Optional:

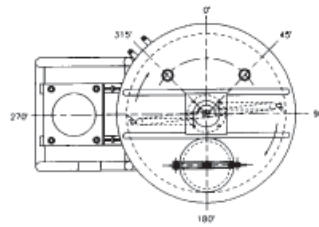
- 4" clamp style outlet on 200 gallon and larger

LORSS with Domehead and Manway

Model Gal.	A	B	C	D	Side/Bottom Scrape		Impeller Diameter Inches	Motor Size HP	Side wall Template Sq. ft.	Bottom Cone Template Sq. ft.
	Inches				HP	RPM				
200	58	63	16.75	63	3	4.2-21	14	60	10.3	17.7
300	64	63	16.75	69	5	4.2-21	14	75	14.6	21.3
400	64	70	16.75	69	7.5	4.2-21	14	100	24.8	21.3
500	64	77	16.75	69	7.5	4.2-21	14	125	35.6	21.3



Elevation View



Top View

Standard:

- Two 2" clamp style inlets
- 18 inch diameter manway
- Dimple heat transfer is rated for 125 psi ASME certified
- 0.25 316L product contact surface

Optional:

- 4" clamp style outlet



LIKWIFIER™

1230 Taney North Kansas City, Missouri 64116

816-561-9050 • Fax: 816-561-7778

www.likwifier.com

a division of


ENGINEERING CREATIVE SOLUTIONS